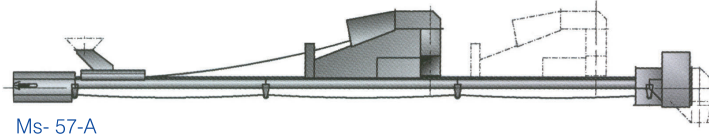


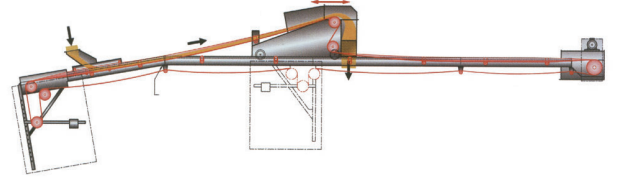
# BANTLI GÖTÜRÜCÜ / BELT CONVEYOR / TRANSPORTEUR A BANDE

Düzenli / Regular



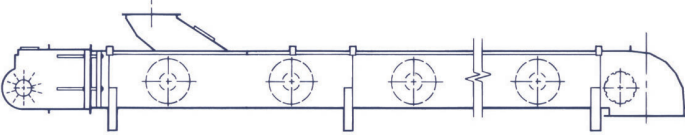
Ms-57-A

Yük Arabası ile / With Diverter Car

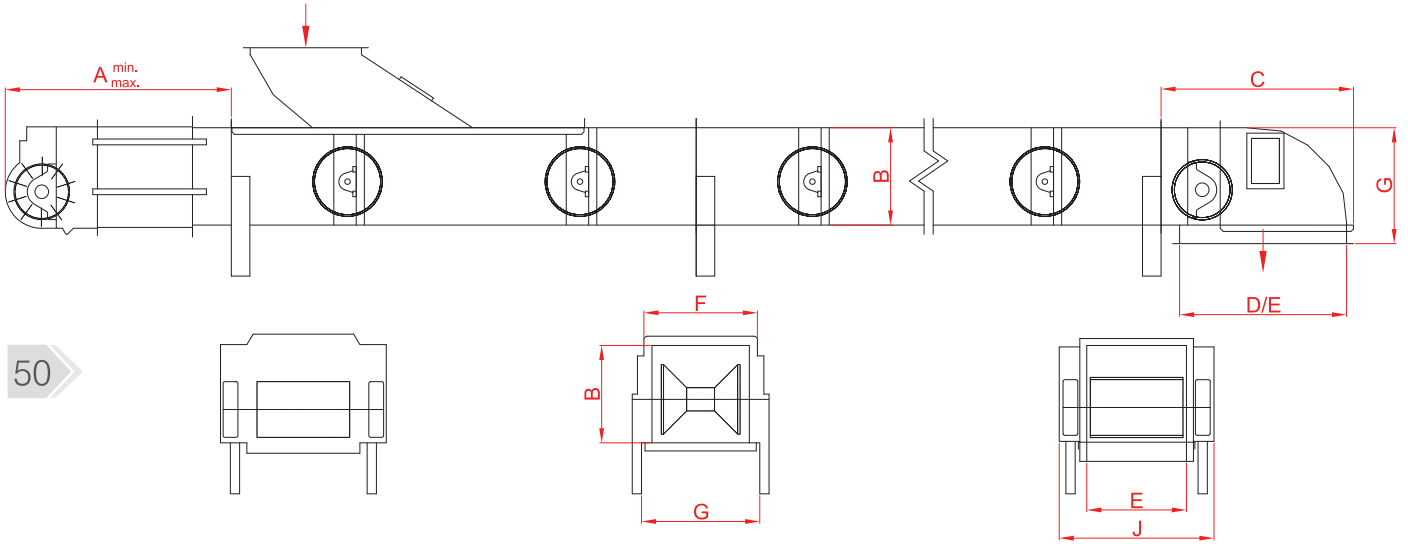
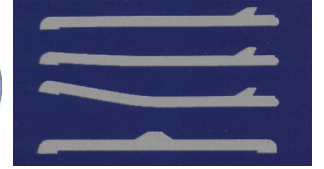
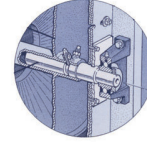
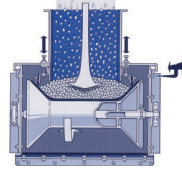


Ms-57-B

Kapalı / Covered



Ms-57-C



## ÖLÇÜLER - DIMENSIONS (mm)

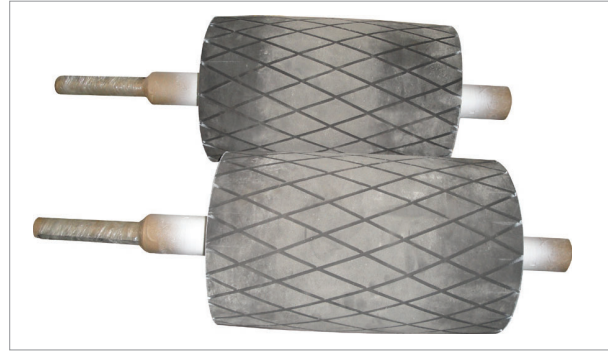
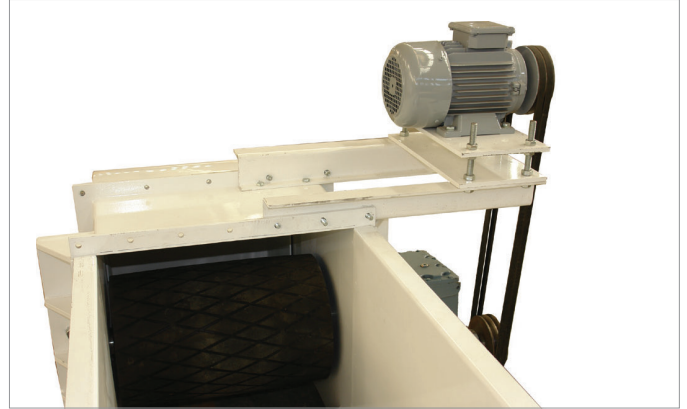
Tip / Type	A (min.)	A (max.)	B	C	D	E	F	G	H	J
Ms-57-460	1238	1695	533	1016	915	546	625	533	635	848
Ms-57-610	1238	1695	533	1016	915	699	778	686	635	1000
Ms-57-760	1289	1746	686	1016	915	850	905	813	787	1216
Ms-57-915	1289	1746	686	1016	915	1003	1057	965	787	1368
Ms-57-1070	1289	1746	686	1016	915	1156	1210	1118	787	1521
Ms-57-1220	1289	1746	686	1016	915	1308	1362	1270	787	1673
Ms-57-1370	1289	1746	686	1016	915	1460	1515	1422	787	1826

## BANT HIZI - BELT SPEED - VITESSE DE BANDE

Tip / Type	0,508	1,016	1,524	2,032	2,286	2,540	2,794	3,048	3,302	3,556
Ms-57-460	28	57	85	113	128	142	156	170	184	199
Ms-57-610	49	98	148	197	222	246	271	295	320	345
Ms-57-760	82	163	245	327	367	408	449	490	531	571
Ms-57-915	112	224	337	449	505	561	617	673	729	785
Ms-57-1070	145	290	436	581	653	726	799	871	944	1017
Ms-57-1220	181	361	542	723	813	904	994	1084	1175	1265
Ms-57-1370	219	437	656	875	984	1093	1203	1312	1421	1531

\* The above capacities are rated under ideal conditions with dry material being properly fed into the conveyor and horizontal usage. Bulk weight : 0.75 t/m<sup>3</sup>

BANTLI GÖTÜRÜCÜ / BELT CONVEYOR / TRANSPORTEUR A BANDE



51

