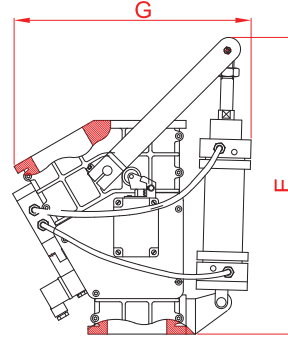
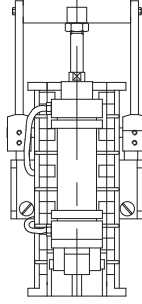
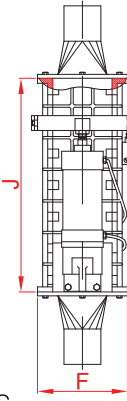
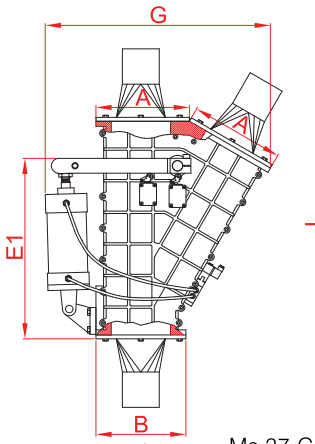
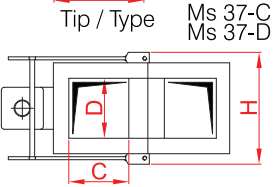


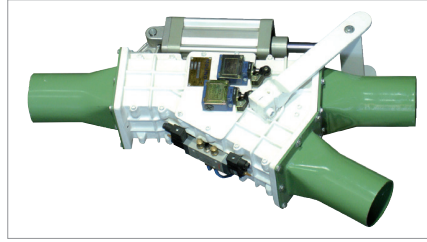
# PNÖMATİK YÖN KLAPESİ / DIVERTER VALVE / CLAPET D'ORIENTATION



Tip / Type Ms 37-A  
Ms 37-B



Tip / Type Ms 37-C  
Ms 37-D



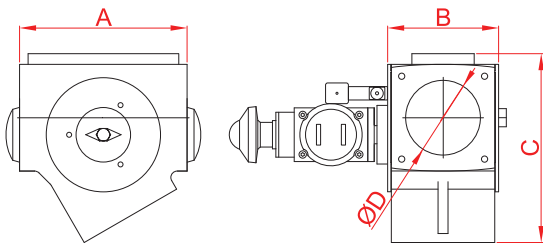
## TEKNİK BİLGİLER - TECHNICAL DATA

Tip / Type	Max. Basınç Max. Pressure (mbar)	Ağırlık Weight (kg)
Ms-37-A	1000	20
Ms-37-B	1000	53
Ms-37-C	1000	95
Ms-37-D	1000	232

## ÖLÇÜLER - DIMENSIONS (mm)

Tip / Type	Boru/Pipe Ø	A	B	C	D	E	E1	F	G	H	J
Ms-37-A	51~76	117.5	125	76	76	420	345	125	310	178	275
Ms-37-B	76~108	161.5	160	108	109	550	450	169	464	235	430
Ms-37-C	108~150	223	243	150	150	670	515	228	600	285	525
Ms-37-D	150~200	315	303	200	200	800	600	303	760	352	720

59

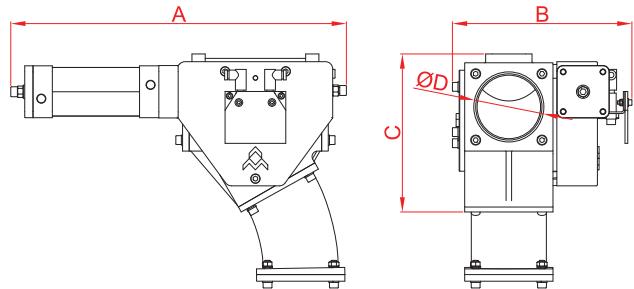
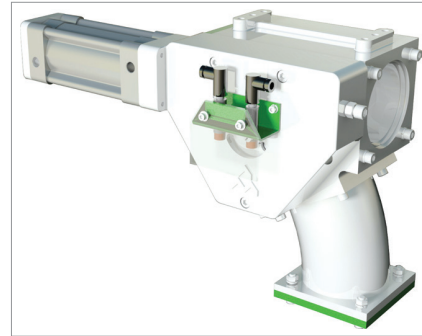


## ÖLÇÜLER- DIMENSIONS (mm)

Tip / Type	A	B	C	ØD
Ms-89-65	160	113	170	65
Ms-89-100	200	147	235	100
Ms-89-120	230	168	285	120
Ms-89-160	320	227	385	160

## TEKNİK BİLGİLER - TECHNICAL DATA

Tip / Type	Aktüatör Actuator	Valf Solonoid Valf	Sınır Şalter Limit Switch
Ms-89-65	T-RPA DA/SR 60	T-NM32W1S , 1/4 - 5/2	T-LSG - 2M
Ms-89-100	T-RPA DA/SR 80	T-NM32W1S , 1/4 - 5/2	T-LSG - 2M
Ms-89-120	T-RPA DA/SR 80	T-NM32W1S , 1/4 - 5/2	T-LSG - 2M
Ms-89-160	T-RPA DA/SR 100	T-NM32W1S , 1/4 - 5/2	T-LSG - 2M



## ÖLÇÜLER- DIMENSIONS (mm)

Tip / Type	A	B	C	ØD
Ms-101-120	608	325	286	120
Ms-101-150	608	331	338	150